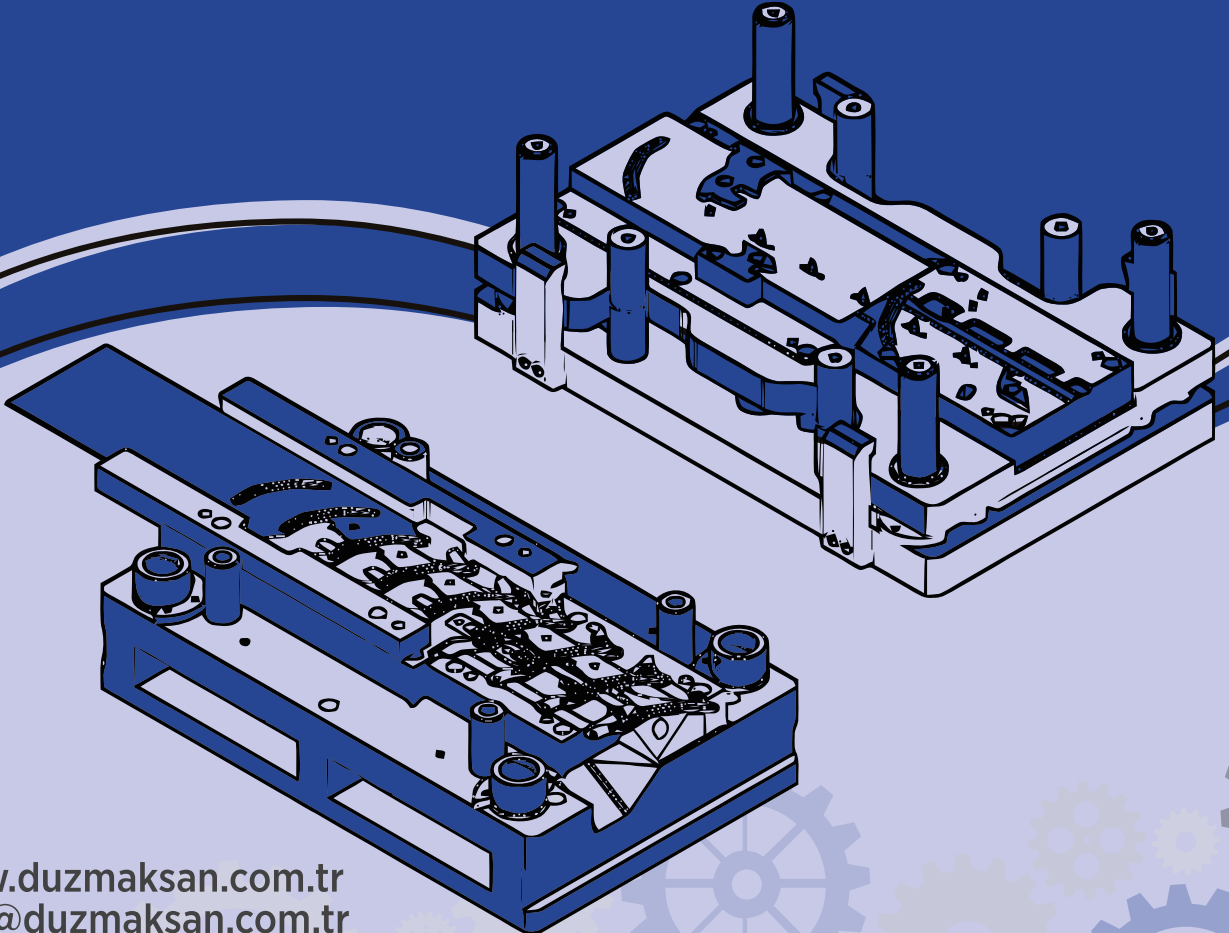




# DÜZMAKSAN

## KALIP MAKİNE TASARIM

İMALAT DANIŞMANLIK SAN. VE TİC. LTD. ŞTİ.





## HAKKIMIZDA ABOUT US

DÜZMAKSAN, 2014 yılında kurulmuş bir şirket olup, Düzce ve çevresindeki işletmelere yönelik sunduğu kaliteli hizmetlerle kısa sürede önemli bir konuma gelmiştir. Kurucularının azimli çabalarıyla başlayan bu yolculuk, özellikle tasarım, kalite ve otomotiv sektörlerinde kendine sağlam bir yer edinmiştir.

Kuruluş yılında, DÜZMAKSAN, tersine mühendislik yöntemleri ve özgün tasarım anlayışlarıyla yedek parça imalatı, kalıp, aparat ve fiyestür tasarımı ve imalatı konularında faaliyet göstererek sektördeki ihtiyaçlara uygun çözümler sunmuştur. Aynı zamanda, teknik destek hizmetleriyle de müşterilerine güvenilir bir iş ortağı olma yolunda önemli adımlar atmıştır.

DÜZMAKSAN, hizmet kalitesini en üst seviyeye çıkarmak amacıyla uzmanlaşmış bir ekibin öncülüğünde yol almaktadır. Şirket, sac metal kalıplılığı, fiyestür ve mekanik imalat konularında yüksek kalifikasyona sahip, disiplinli ve ciddi bir ekip tarafından yönetilmektedir. Bu profesyonel ekip, müşterilere yüksek standartlarda hizmet sunarak kaliteli çözümler üretmektedir.

DÜZMAKSAN, sektördeki hızlı ilerleyişiyle, özellikle tasarım, kalite kontrol ve otomotiv sektörlerinde kendini göstermektedir. Şirket, müşteri ihtiyaçlarına etkin ve güvenilir çözümler sunma konusundaki başarısıyla ön plana çıkmakta, sağlamış olduğu farklılıklarla kalıcı üstünlükler elde etmektedir. Tasarım konusundaki özgün yaklaşımları ve otomotiv sektöründeki uzmanlığıyla DÜZMAKSAN, müşterilerine sadece üst düzey hizmetler sunmakla kalmayıp aynı zamanda sektöre yön veren bir marka olma hedefine emin adımlarla ilerlemektedir.

*DÜZMAKSAN, a company established in 2014, has reached an important position in a short time with the quality services it offers to businesses in Düzce and its surroundings. This journey, which started with the determined efforts of its founders, has gained a solid place for itself especially in the design, quality and automotive sectors.*

*In the year of its establishment, DÜZMAKSAN has been operating in the fields of spare parts manufacturing, mold, apparatus and fixture design and manufacturing with reverse engineering methods and original design approaches, offering solutions suitable for the needs in the sector. At the same time, it has taken important steps towards becoming a reliable business partner to its customers with its technical support services.*

*DÜZMAKSAN is under the leadership of a specialized team in order to maximize service quality. The company is managed by a disciplined and serious team with high qualifications in sheet metal stamping, fixture and mechanical manufacturing. This professional team produces quality solutions by providing high standards of service to customers.*

*DÜZMAKSAN, with its rapid progress in the sector, especially in the design, quality control and automotive sectors. The company stands out with its success in providing effective and reliable solutions to customer needs and achieves permanent superiority with the differences it provides. With its unique approaches to design and its expertise in the automotive sector, DÜZMAKSAN is taking firm steps towards its goal of not only providing high-level services to its customers, but also becoming a brand that shapes the sector.*



## MİSYONUMUZ OUR MISSION

Sac metal şekillendirme, kaynaklı birleştirme ve kalıp imalatı konularında, başarılı çalışmalar yaparak üretim şartlarını yerine getirebilmek için gerekli teknolojik altyapı gereksinimlerini karşılayarak sektörde en güvenilir ve rekabetçi firma olarak, çevre, toplum, tedarikçi, müşteri ve çalışanlarımızın memnuniyetini sürekli artırmak ve iyileştirmektedir.

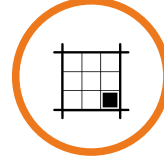
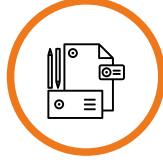
*To continuously increase and improve the satisfaction of our environment, society, suppliers, customers and employees as the most reliable and competitive company in the sector by meeting the technological infrastructure requirements necessary to fulfill the production conditions by making successful studies in sheet metal forming, welded joining and mold manufacturing.*



## VİZYONUMUZ OUR VISION

Ulusal ve uluslararası pazarda ana tedarikçi sektöründe, müşterilerimiz tarafından çözüm ortağı olarak kabul edilen büyük ölçekli bir firma olmaktır.

*To be a large-scale company accepted as a solution partner by our customers in the main supplier sector in the national and international market.*



S.NO	TEZGAH MARKASI & CİNSİ MACHINES	MARKA - MODEL BRAND	İŞLEME KAPASİTESİ CAPACITY	ADET QUANTITY
1	<b>CNC Dikey İşleme Merkezi</b> CNC Vertical Milling Machine	DMG MORI CMX 50U	Ø630x550 mm	1
2	<b>CNC Dikey İşleme Merkezi</b> CNC MILLING MACHINE	HARTFORD MVP1060	1000x600 mm	1
3	<b>CNC Dikey İşleme Merkezi</b> CNC MILLING MACHINE	FRONTIER MCV1166	1160x600 mm	1
4	<b>CNC Dikey İşleme Merkezi</b> CNC MILLING MACHINE	FRONTIER MCV650	650x500 mm	1
5	<b>CNC Tel Erezyon</b> CNC Wire EDM	SODICK-SPW SPM600	600x400x300 mm	1
6	<b>CNC Tel Erezyon</b> CNC Wire EDM	CHARMILES ROBOFIL 390	600x400x300 mm	1
7	<b>CNC Hızlı Delik Delme</b> CNC Rapid Hole Drill	YUGAR-YGS43Z	400x800 mm	1
8	<b>CNC Yatay İşleme Merkezi</b> CNC Mill-Turn Centers	QUICKTECH 5 Axis Mill-Turn Center	6 "	1
9	<b>CNC Yatay İşleme Merkezi</b> CNC Mill-Turn Centers	GOODWAY GLS200	8 "	1
10	<b>Kılavuz Çekme Makinası</b> Drilling & Tapping Machine	SERVO	M3-M16	2
11	<b>Manuel Freze Makinası</b> Tool Milling Center	EUMEGA	400x800 mm	2
12	<b>Satış Taşlama</b> Surface Grinding	ORSHA	400x800 mm	3
13	<b>Silindirik Taşlama</b> Cylinder Grinding	G.RASTELLI	Ø300x1000 mm	1
14	<b>Manuel Torna Tezgahı</b> Manuel Lathe Machine	CS-6250B	Ø600x2000 mm	1
15	<b>TIG Kaynak Makinesi</b> TIG Welding Machine	LINCOLN INVERTEC V270 T PULSE		2
16	<b>Gaz Altı Kaynak Makinesi</b> Gas Welding Machine	DURMAZ-DKM350		1
17	<b>Lazer Yazı Makinesi</b> Laser Marking Machine	RANAX	150x150 mm	1
18	<b>C Tipi Eksantrik Pres</b> C Type Eccentric Press	DIRINLER	125 TONS	1
19	<b>C Tipi Eksantrik Pres</b> C Type Eccentric Press	MOSSINI	100 TONS	1
20	<b>Kumlama Makinası</b> SandBlasting Machine	DMS (OUR PRODUCT)	1000x600x500 mm	1



Proje yönetiminiz 'Proje Yönetim Sistemi Proses Akış Şeması' eşliğinde 5 Fazlı olarak yürütülmektedir.

Süreç girdileri ve çıktıları APQP sürecine uygun olarak tasarlanmıştır.

- Faz.1 – Fizibilite ve Teklif
- Faz.2 – Tasarım
- Faz.3 – Sipariş ve Ekipman İmalat
- Faz.4 – Ön Seri – Test ve Kalite Dokümantasyonu
- Faz.5 – S.O.P. – Proje Kapanışı

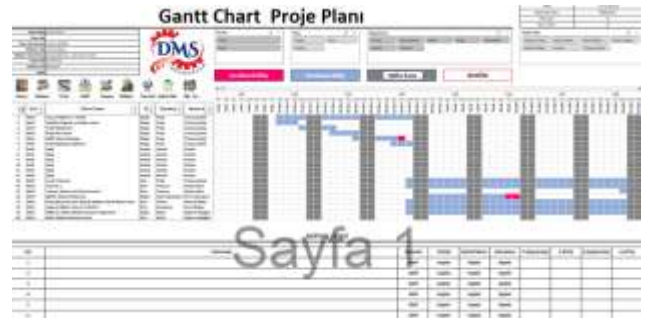
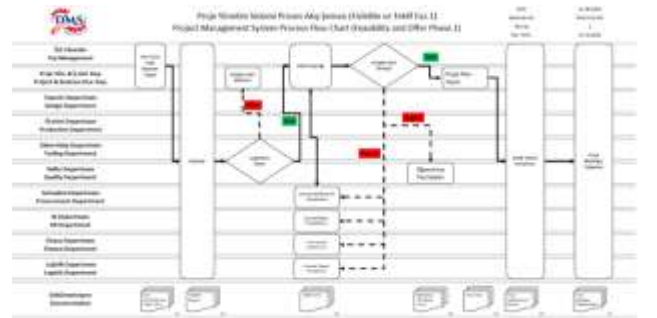
Müşteri isteği çerçevesinde ISIR ve PPAP dokümantasyon hazırlıkları.

*Our project management is carried out in 5 phases with the 'Project Management System Process Flow Chart'.*

*Process inputs and outputs are designed in accordance with the APQP process.*

- Phase.1 - Feasibility and Proposal*
- Phase.2 - Design*
- Phase.3 - Order and Equipment Manufacturing*
- Phase.4 - Pre-Series - Testing and Quality Documentation*
- Phase.5 - S.O.P. - Project Closure*

*Preparation of ISIR and PPAP documentation in line with customer request.*



## Tasarım Yönetiminde Kullanılan Lisanslı Programlar

Fusion 360  
Inventor  
AutoCAD  
SIEMENS NX  
EZ CAM

## Yetkinliklerimiz ;

3D Ürün Tasarımı / Ürün Ağacı yayını  
3D Ekipman Dizayn (Kalıp – Fikstür – Makine)  
2D Ürün Teknik Resmi / Yarı Mamul Resimleri  
3 Eksen CAM  
Tel Erezyon CAM

## Licensed Programs Used in Design Management

Fusion 360  
Inventor  
AutoCAD  
SIEMENS NX  
EZ CAM

## Our Competencies in CAD/CAM ;

3D Product Design / BOM publication  
3D Equipment Design (Mold - Fixture - Machine)  
2D Product Technical Drawings / Semi-finished Product Drawings  
3 Axis CAM  
Wire EDM CAM

**SIEMENS**



**AUTODESK®  
INVENTOR®**



**AUTODESK  
Fusion 360**



**AUTODESK  
AutoCAD 2023**





## KALİTE SİSTEM YÖNETİMİ ALT BAŞLIKLARI

ISO 9001:2015'e ek olarak;

- Proje Yönetim Sistemi (APQP Süreci uygulayabilme yeteneği)
- PPAP Dokümantasyonu uygulayabilme yeteneği
- Proses Yeterlilikleri Ölçümü ve Kontrolü
- İzlenebilirlik Sistemi
- 8D Problem Çözme Yetkinliği
- Ürün & Data Değişiklik Yönetimi Yetkinliği

Otomotiv ve beyaz eşya müşterilerimize yukarıdaki ek alanlarda isteğe bağlı olmak üzere ürün ile beraber bu hizmetleri de sunabilmekteyiz.

### QUALITY SYSTEM MANAGEMENT SUB-HEADINGS

In addition ISO 9001:2015

- *Project Management System (ability to implement APQP Process)*
- *Ability to implement PPAP Documentation*
- *Measurement and Control of Process Capabilities*
- *Traceability System*
- *8D Problem Solving Competence*
- *Product & Data Change Management Competency*

*Automotive and white goods customers in the above-mentioned additional areas optionally, these services can be used together with the product.*





**CNC DİK İŞLEM**  
CNC VERTICAL



DMG MORI  
CMX 50U  
5 EKSEN  
5 AXIS



Frontier MCV1166  
1160 x 600  
3 EKSEN  
3 AXIS



Hartford MVP 1060  
1000 x 600  
3 EKSEN  
3 AXIS



Frontier MCV650  
650 x 500  
3 EKSEN  
3 AXIS



QUICKTECH 5 Eksen  
42  
QUICKTECH 5 Axis  
Mill-Turn Center



GOODWAY GLS200  
250 x 400 x 3000  
QUICKTECH 5 Axis  
Mill-Turn Center

**TEL EREZYON**  
WIRE EDM



SODICK-SPW-SPM600  
600 x 400 x 300



CHARMILES-ROBOFIL 390  
600 x 400 x 300



YOUGAR-YGS43Z  
HIZLI DELİK DELME

**MANUEL TEZGAHLAR**  
MANUEL MACHINES



EUMEGA – BURLA  
KALIPÇI FREZE  
2 ADET  
Tool Milling Center - 2 PCs



SATIŞ TAŞLAMA  
3 ADET  
SURFACE GRINDING  
3 PCs

SİLİNDİRİK TAŞLAMA  
1 ADET  
CYLINDER GRINDING  
1 PCs



BOSHI CS-6250B MANUEL TORNA  
MANUEL LATHE

**YARDIMCI EKİPMANLAR**  
SUPPORTING EQUIPMENTS



DURMAZ-DKM350 GAZ ALTI  
KAYNAK MAKİNASI  
DURMAZ-DKM350 GAS WELDING MACHINE



LINCOLN INVERTEC V270-T  
PULSE TIG KAYNAK  
MAKİNASI  
LINCOLN INVERTEC V270-T PULSE TIG WELDING MACHINE



LAZER MARKALAMA  
LASER MARKING



ALFA-4630DT 3 TON FORKLİFT



DMS – KUMLAMA MAKİNASI  
DMS – SANDBLASTING MACHINE



DMS – ZIMPARA MAKİNASI  
DMS – BELT ABRESIVE GRINDER

**PRES**  
PRESS-SHOP



DİRİNLER 125 TON C TİPİ  
EKSANTRİK PRES – 1 ADET  
DIRINLER 125 TONS C TYPE ECCENTRIC PRESS– 1 PCs



MOSSINI 100 TON C TİPİ  
EKSANTRİK PRES – 1 ADET  
MOSSINI 100 TONS C TYPE ECCENTRIC PRESS– 1 PCs



PRESMAK PERÇİN  
SIVAMA PRESİ – 1 ADET  
PRESMAK PUNCHING PRESS - 1 PCs

**PRESHANE YARDIMCI EKİPMAN**  
PRESS-SHOP SUPPORTING EQUIPMENTS



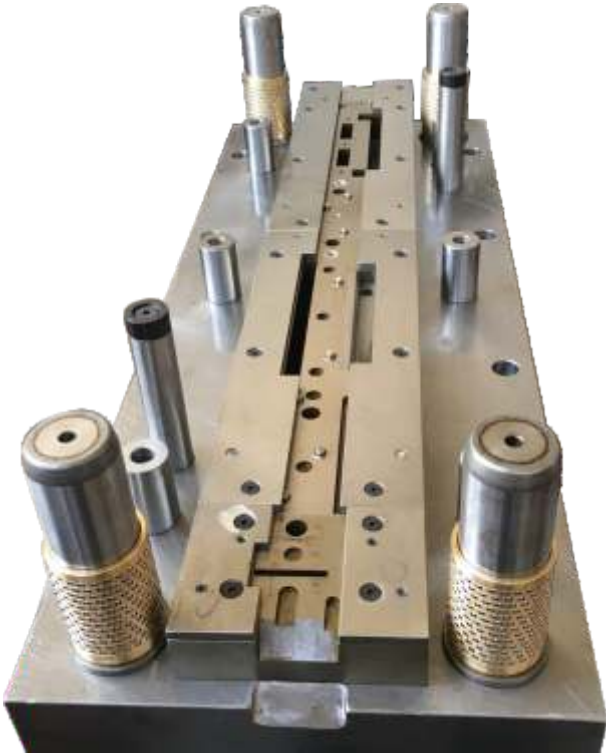
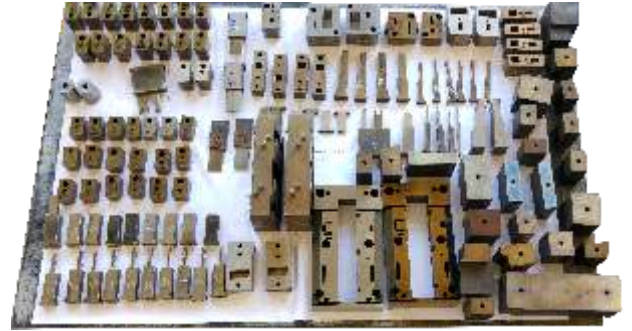
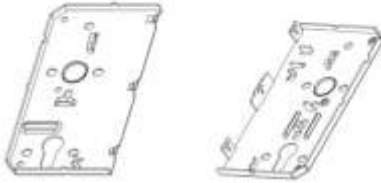
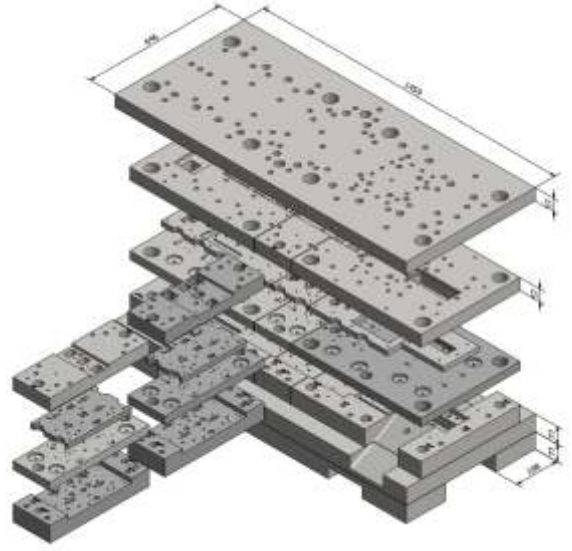
RULO AÇICI – 2 ADET  
DECOILER – 2 PCs



CEMAX GİYOTİN  
MAKAS – 1 ADET  
UPCUT SHEAR – 1 PCs

# PROGRESİF KALIP İMALATLARIMIZDAN ÖRNEKLER

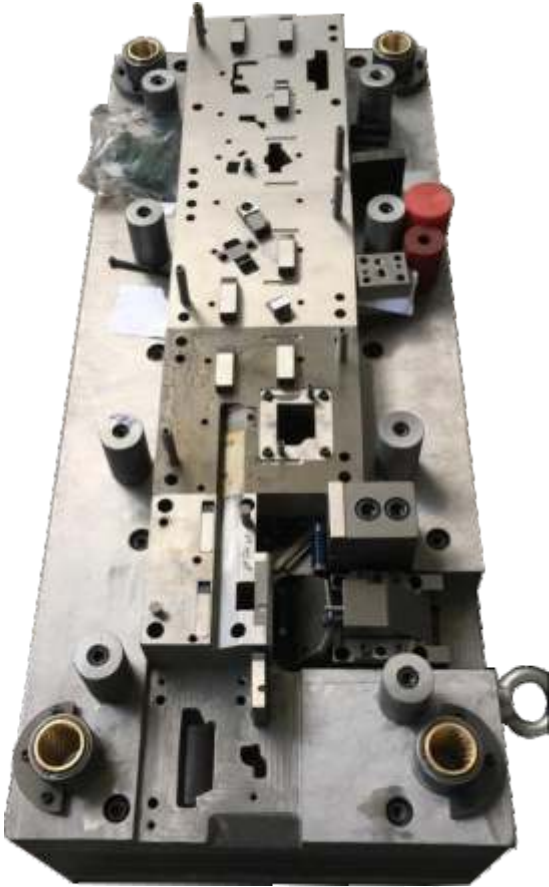
MANUFACTURED PROGRESSIVE DIE SAMPLES



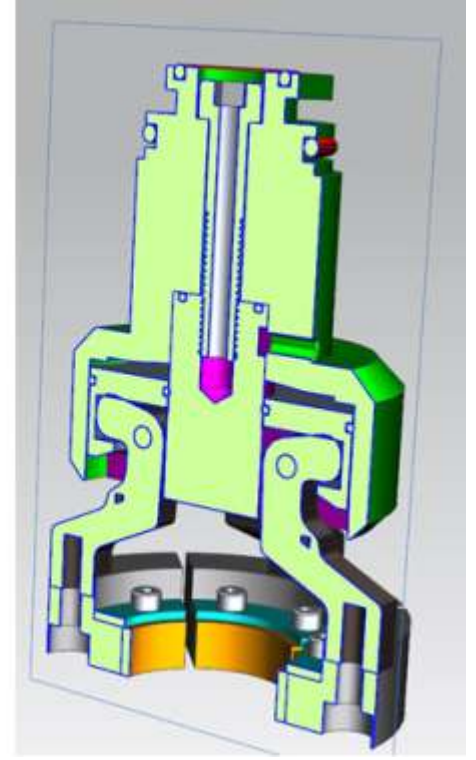
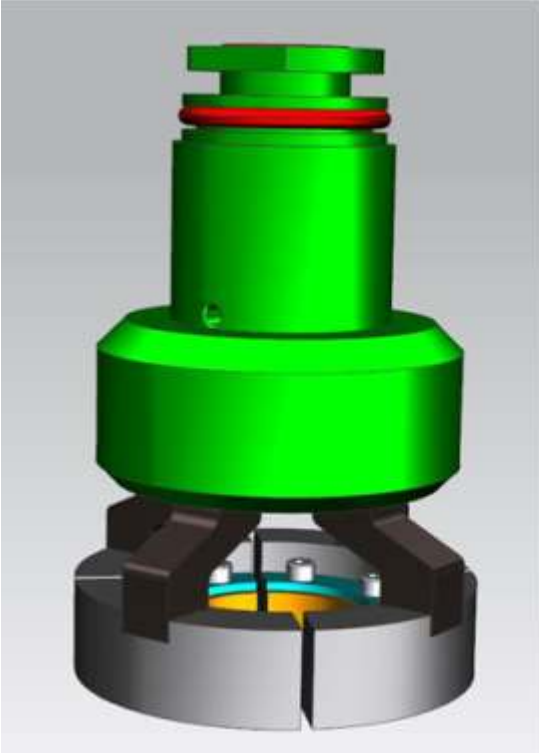
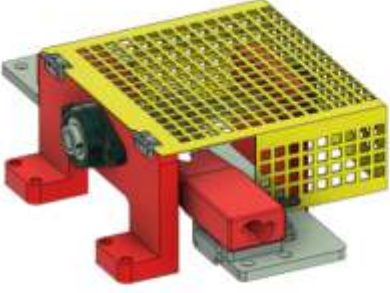


# PROGRESİF KALIP İMALATLARIMIZDAN ÖRNEKLER

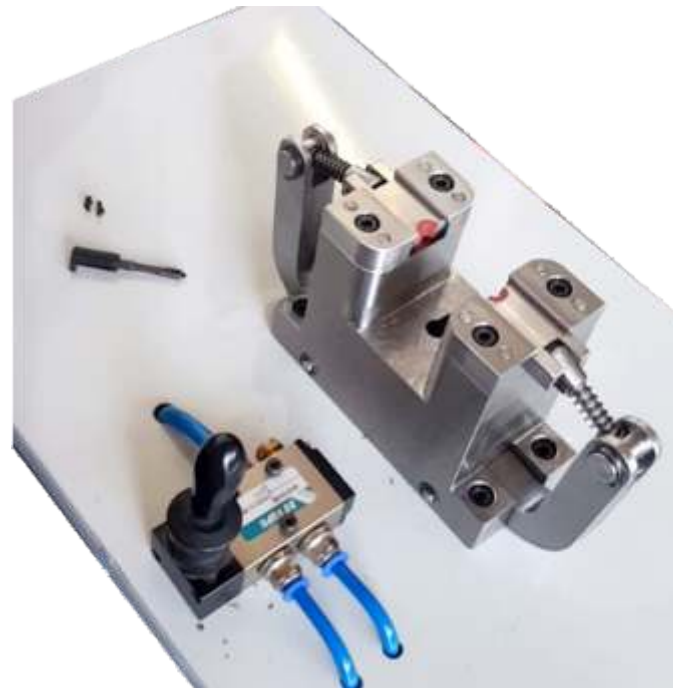
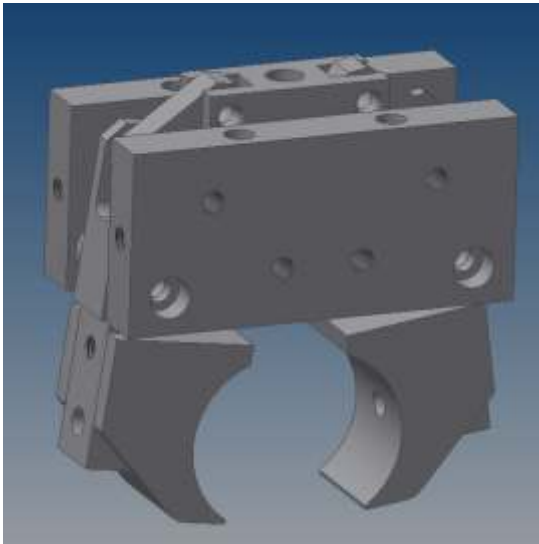
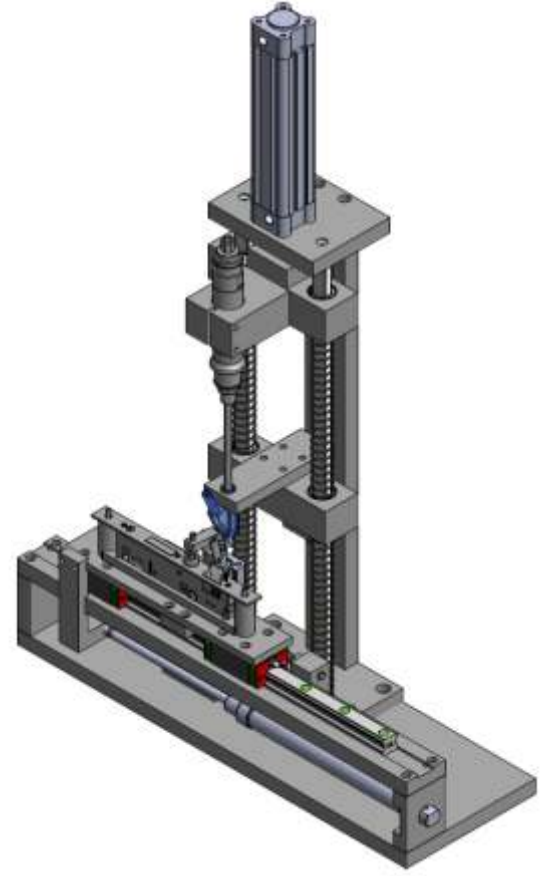
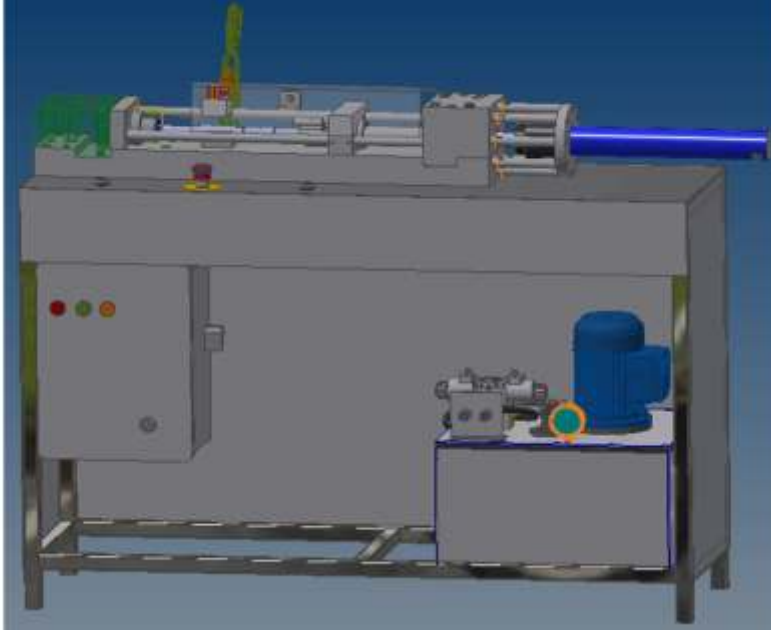
MANUFACTURED PROGRESSIVE DIE SAMPLES



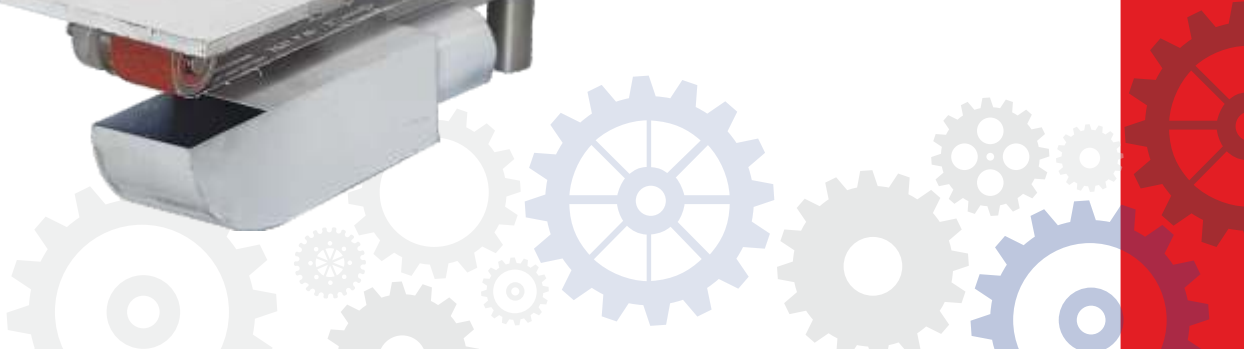
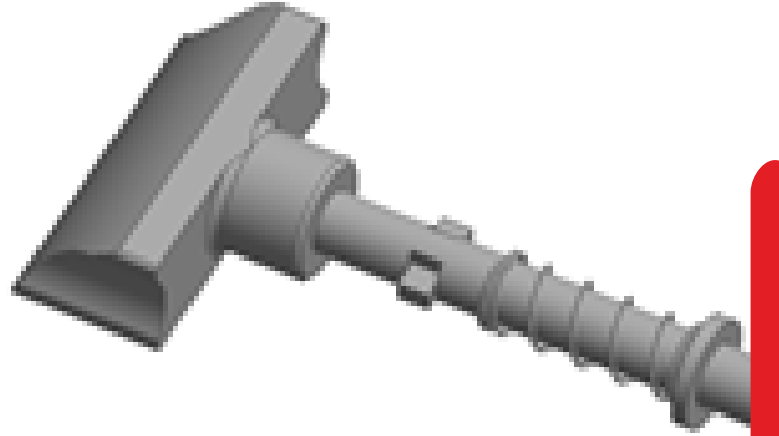
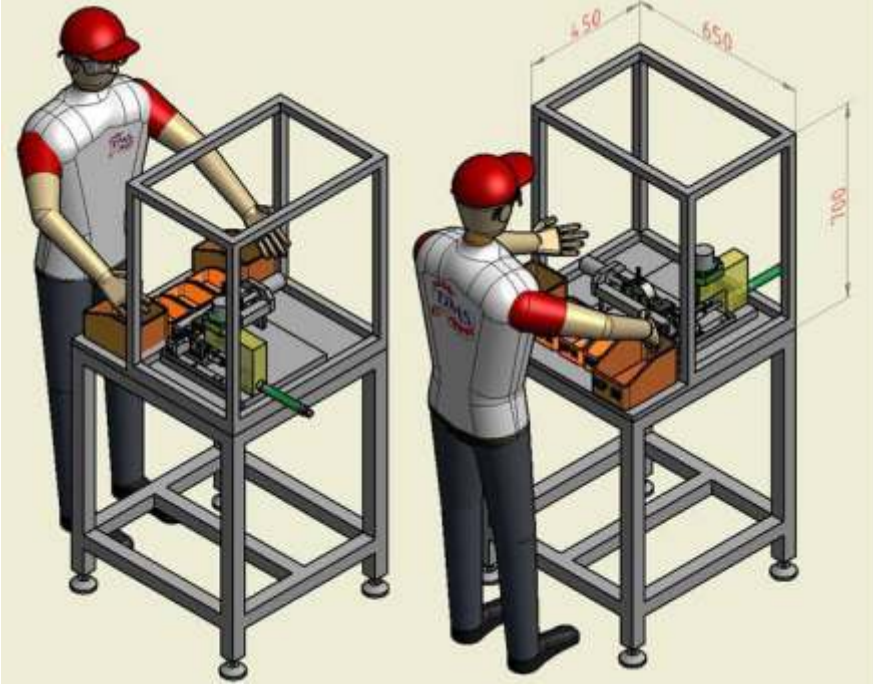






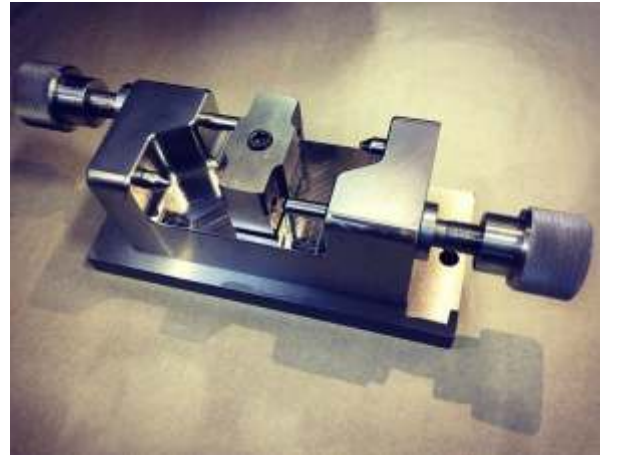
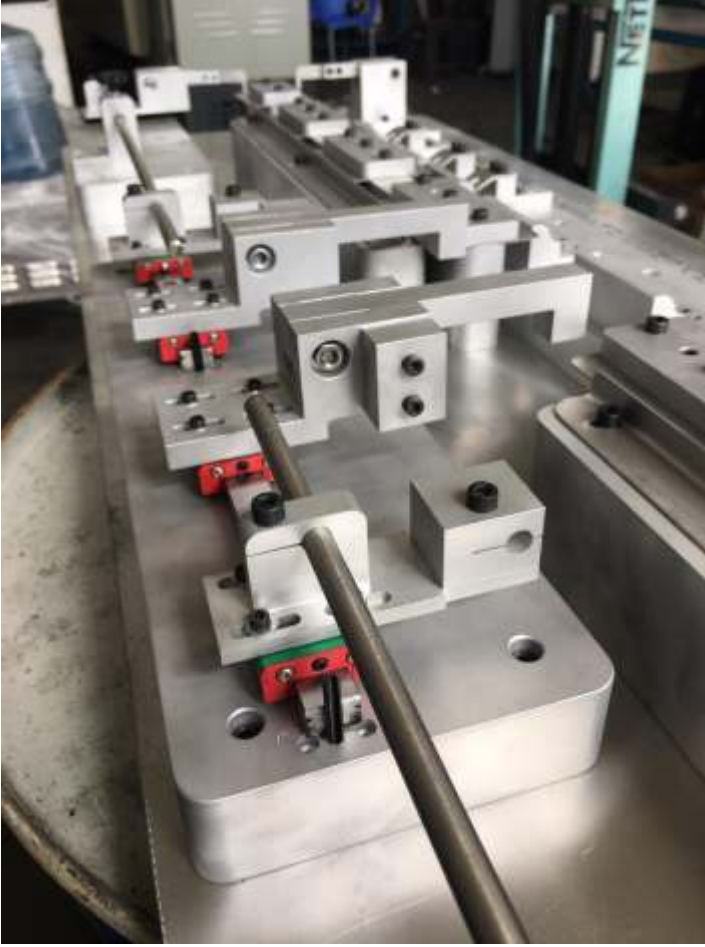
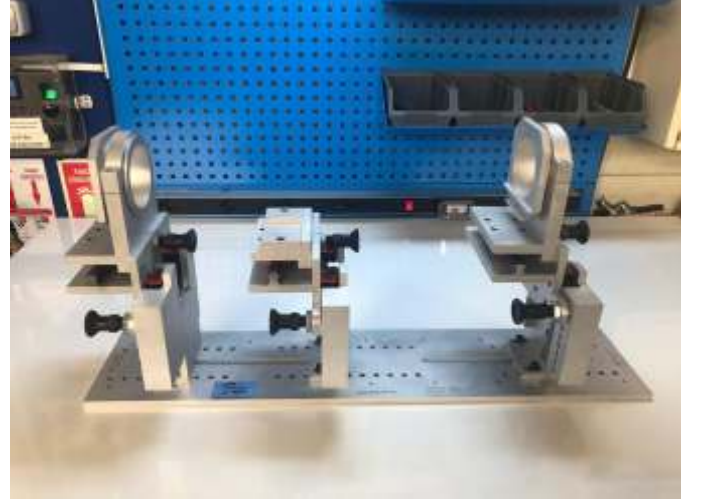


ÖZEL TASARIM ÜRETİM EKİPMANLARI TASARIM VE İMALATLARIMIZDAN ÖRNEKLER  
SAMPLES OF SPECIAL DESIGNS & PRODUCTION EQUIPMENTS MANUFACTURE



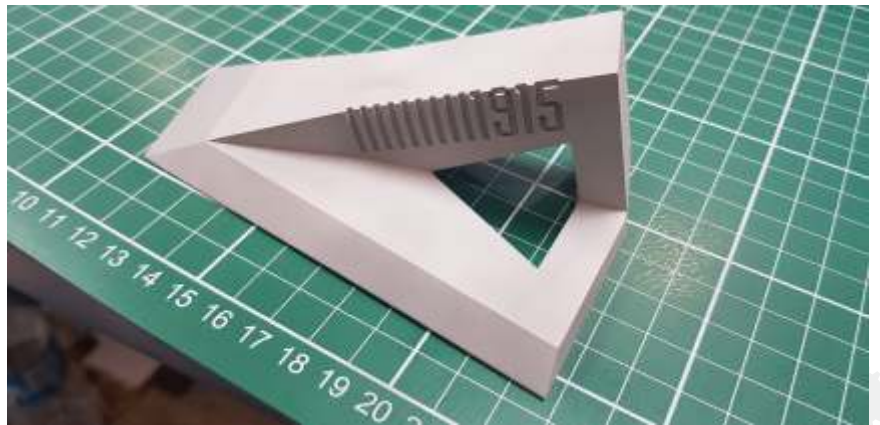
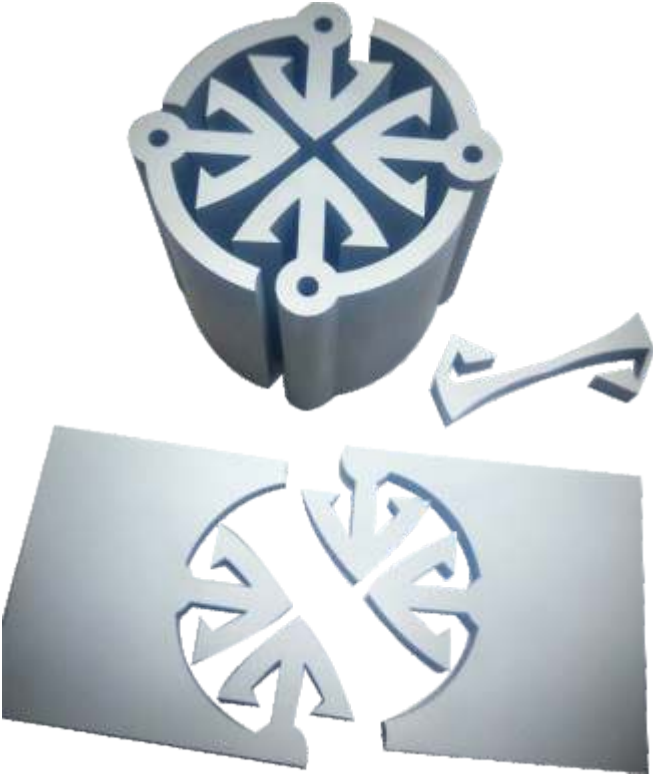


ÖZEL TASARIM ÜRETİM EKİPMANLARI TASARIM VE İMALATLARIMIZDAN ÖRNEKLER  
SAMPLES OF SPECIAL DESIGNS & PRODUCTION EQUIPMENTS MANUFACTURE

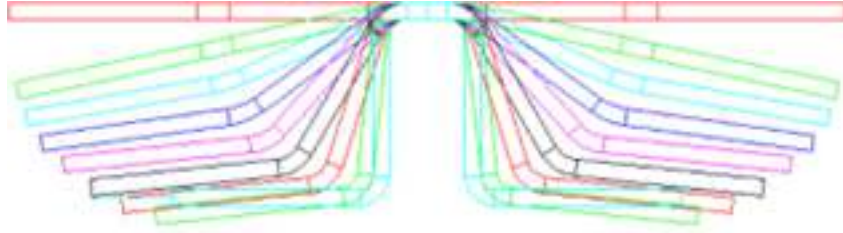


# TEL EROZYON KESİM VE ÖZEL İMALAT PARÇALARI

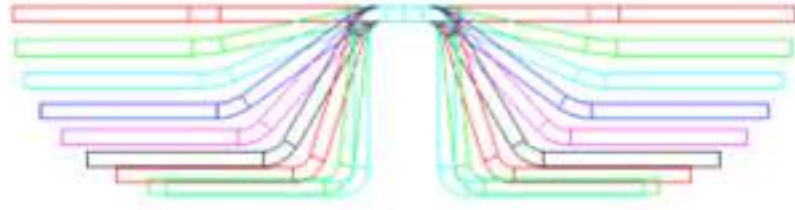
WIRE EDM CUTTING OPERATIONS & MANUFACTURED SPECIAL PARTS



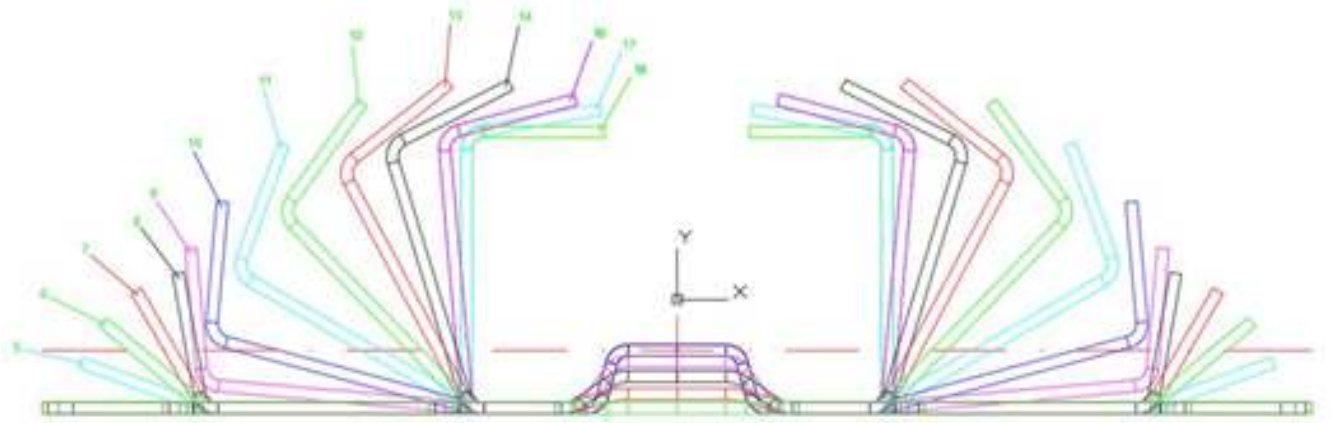


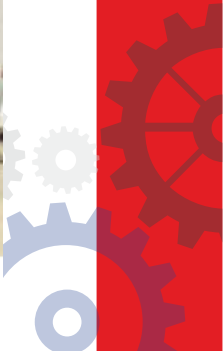
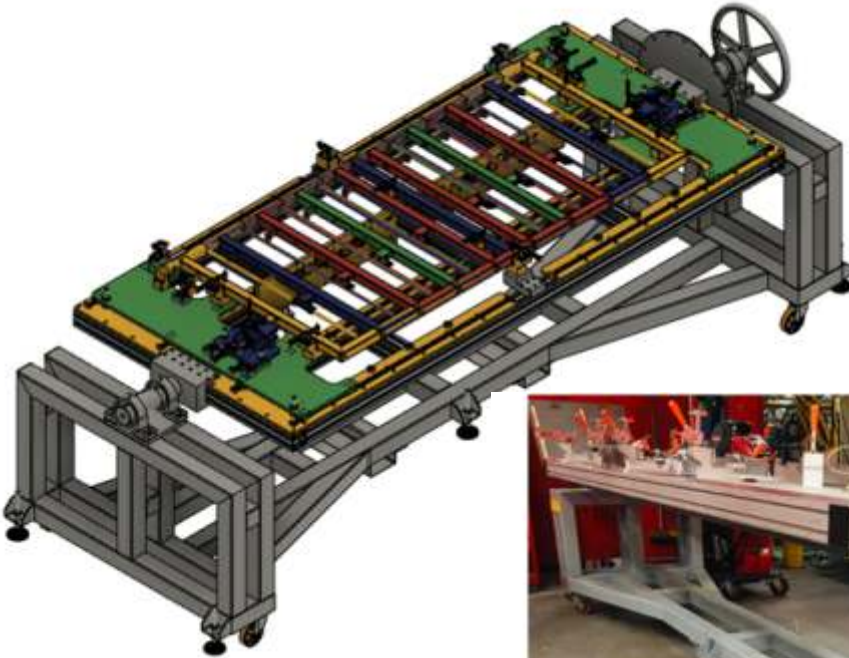
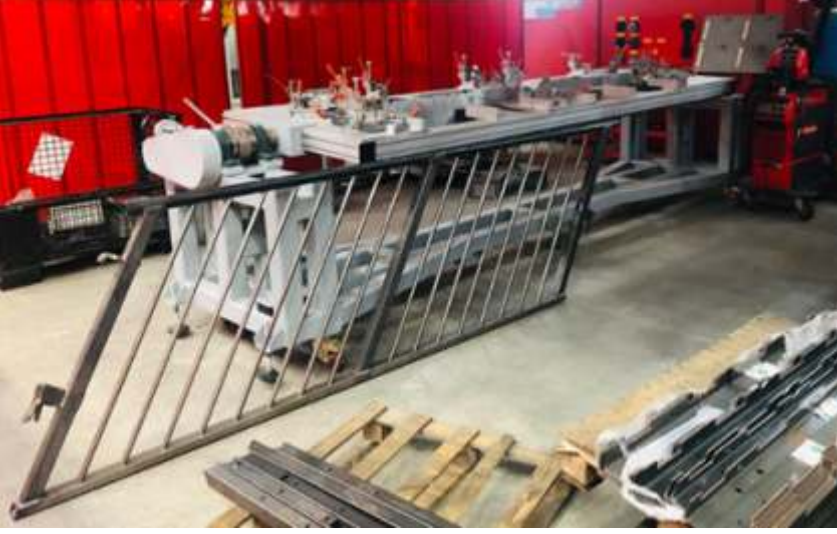


(a)



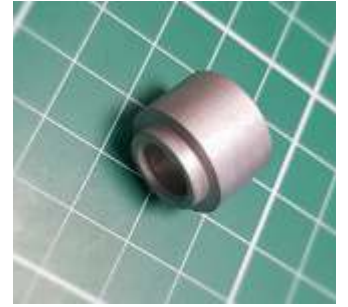
(b)



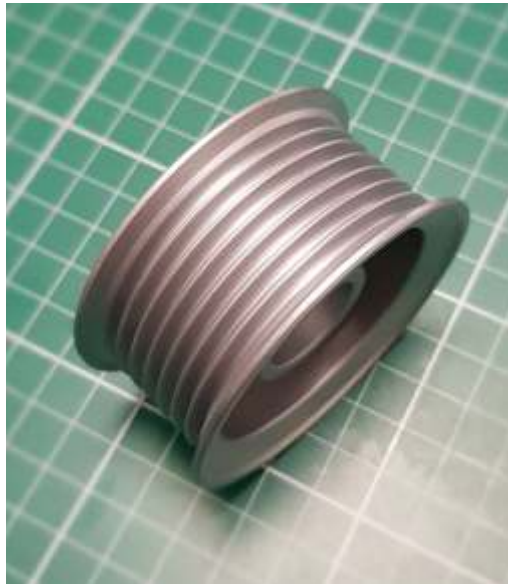




TALAŞLI İMALAT PARÇA ÖRNEKLERİ  
SAMPLES OF MANUFACTURING

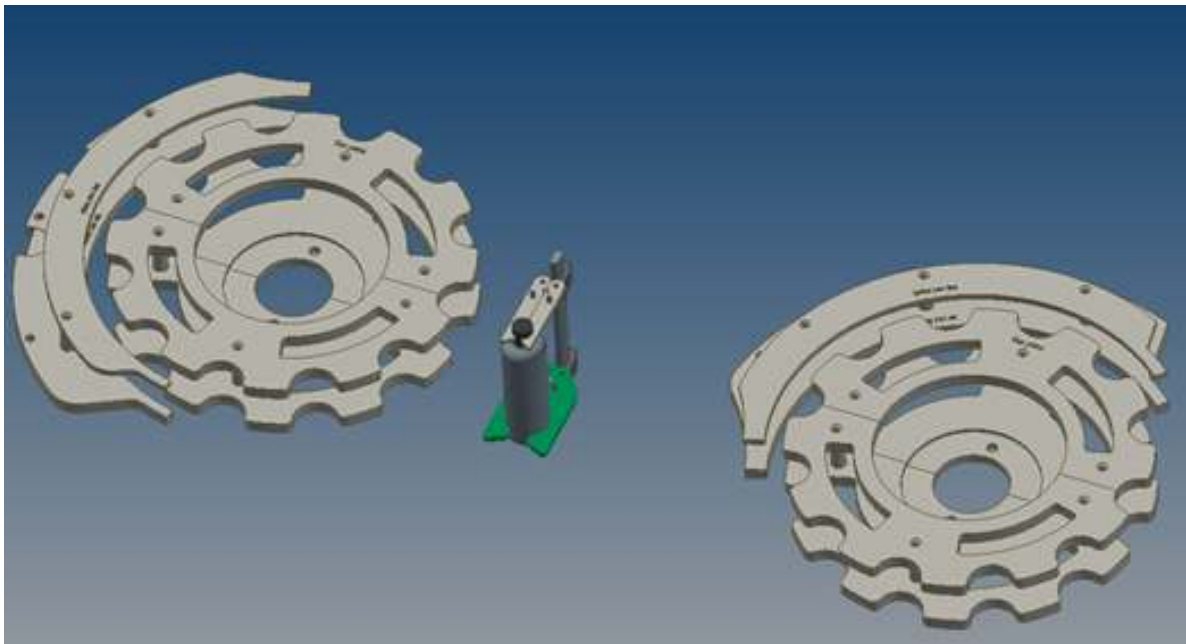
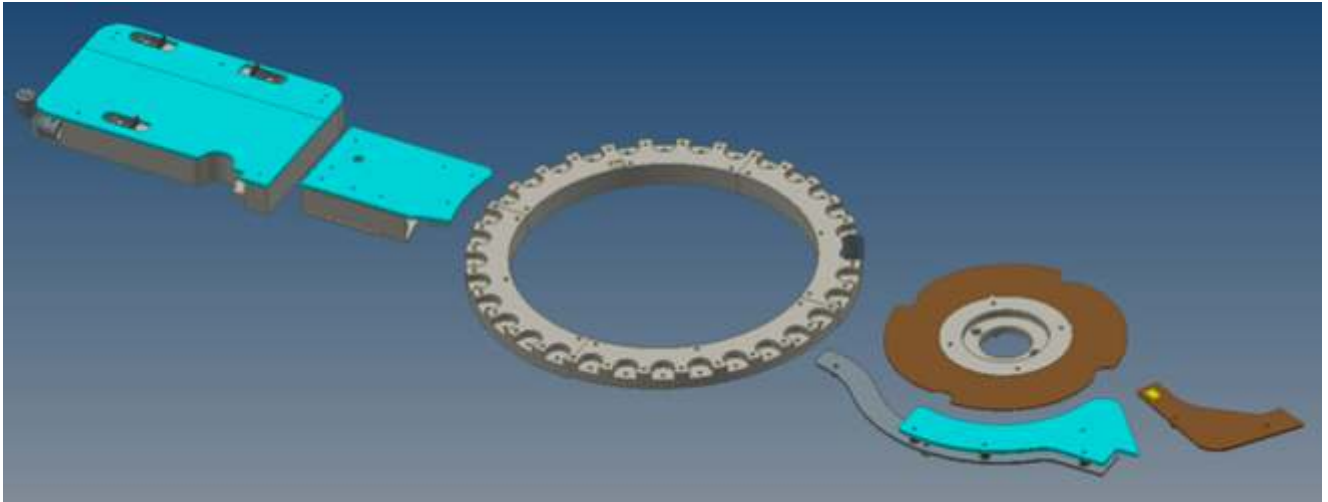
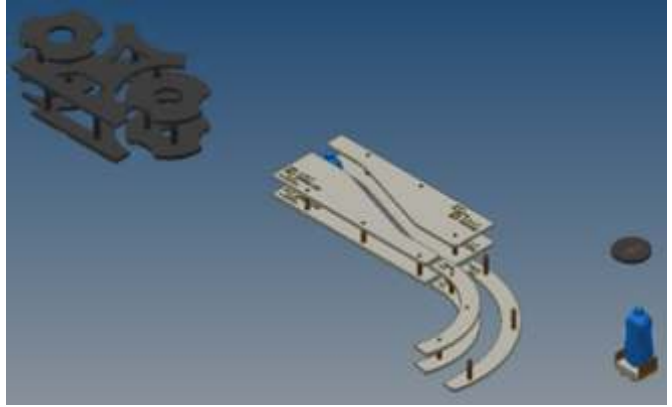
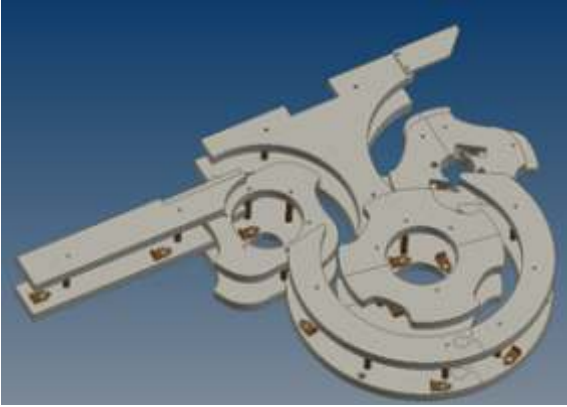






# SIVI SABUN DOLUM HATTI FORMAT PARÇALARI

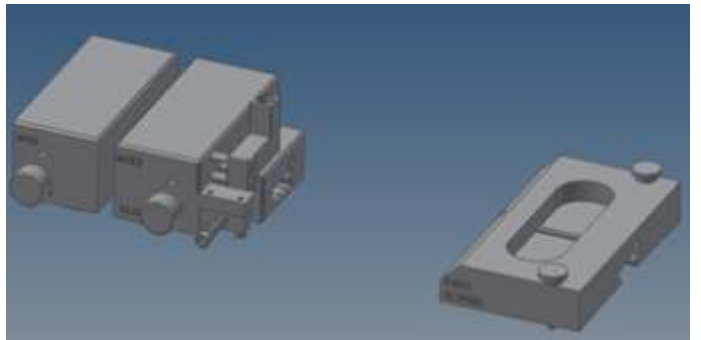
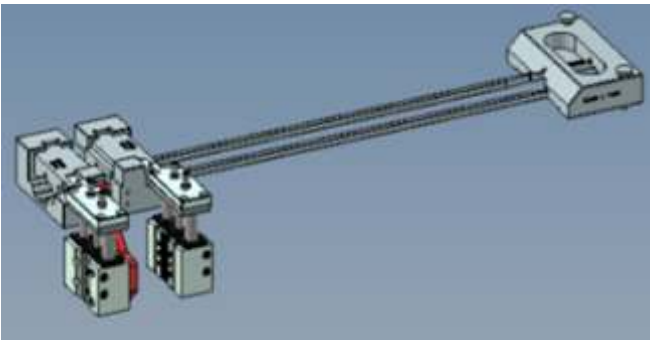
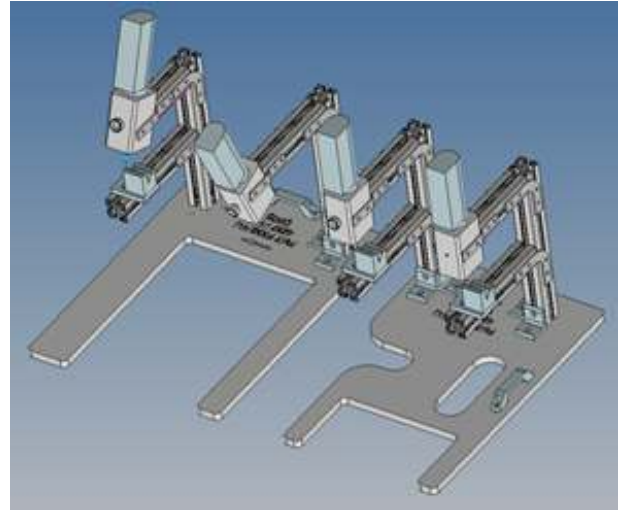
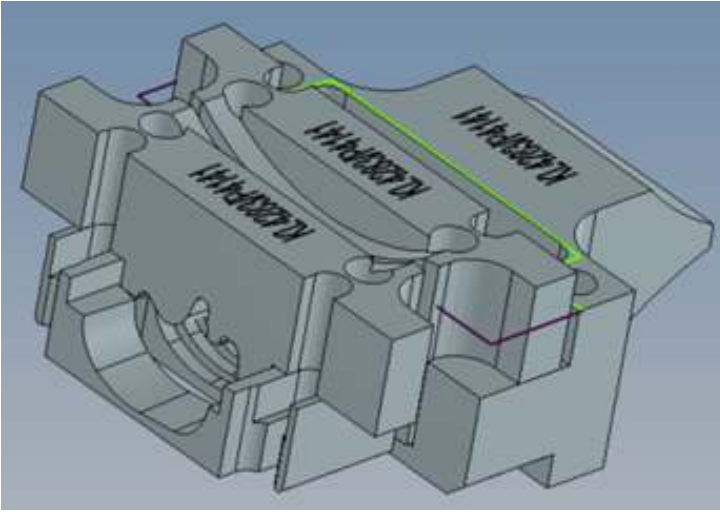
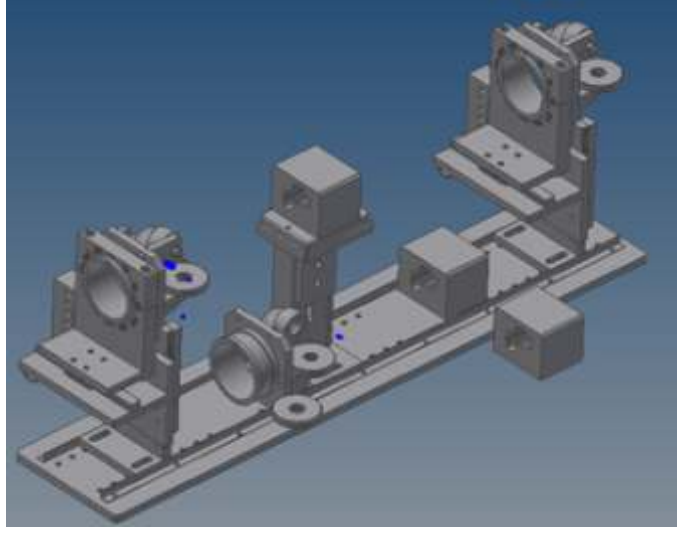
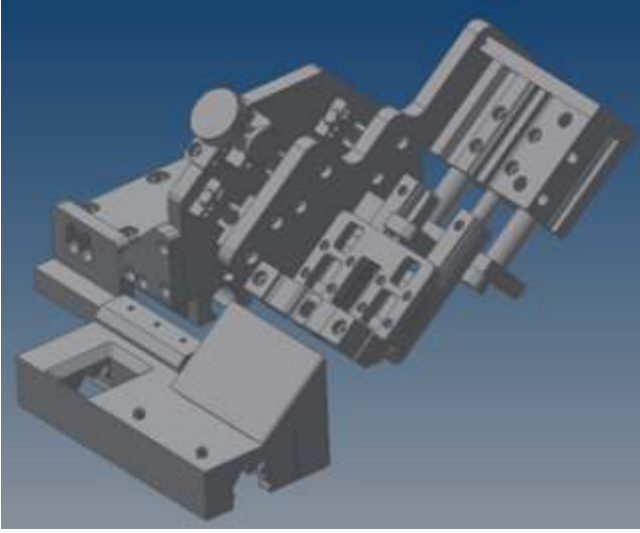
LIQUID SOAP FILLING LINE REPLACEMENT PARTS





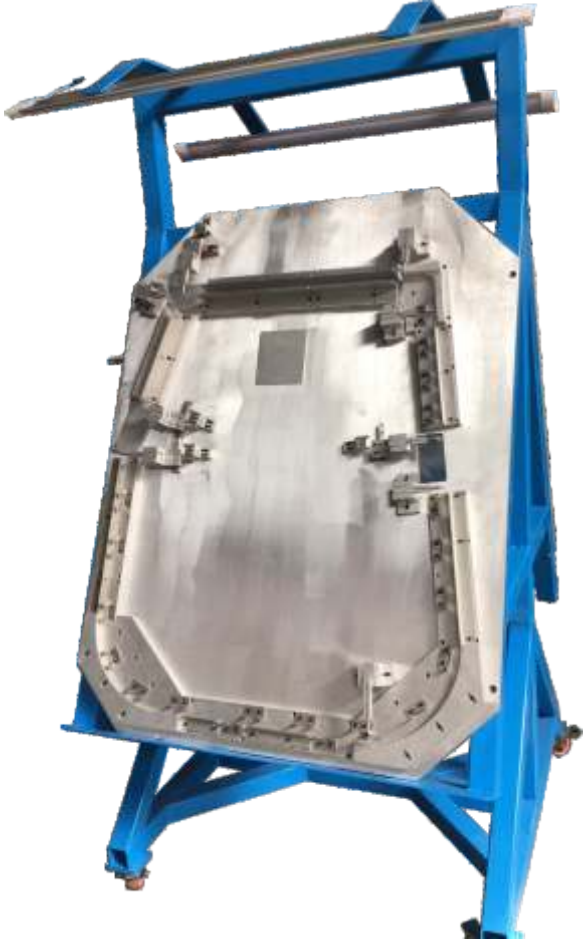
# OTOMOTİV FİTİL ÜRETİM HATLARI PROSES EKİPMANLARI

PROCESS EQUIPMENT OF AUTOMOTIVE SEALS PRODUCING LINES



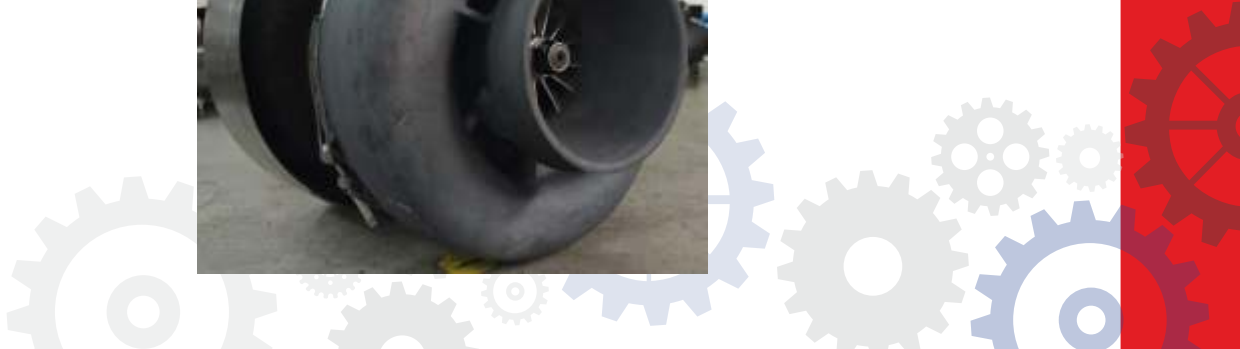
# OTOMOTİV FİTİL ÜRETİM KONTROL ŞABLONLARI

AUTOMOTIVE DOOR & WINDOWS SEALS PRODUCT CHECKING TOOLS





ÖZEL PARÇA İMALATLARIMIZ  
SPECIAL PARTS MANUFACTURING SAMPLES





☎ 0 380 514 90 60

☎ 0 380 514 90 70



[www.duzmaksan.com.tr](http://www.duzmaksan.com.tr)

[info@duzmaksan.com.tr](mailto:info@duzmaksan.com.tr)

📍 Hacıkadirler Köyü Mevkii Kanal Boyu Sk. No: 5  
Gümüşova - Düzce / TÜRKİYE

